

## Care-sheet for your Messor Barbarus Colony (7 Pages long)

Name: Messor barbarus

Colony form: monogyne

Sizes: Queen: 15-18mm, workers: 3-14mm (majors have big red heads)

### Arrival of your ants:

**Messor barbarus are found in warm European countries such as Spain**

- Queen doesn't usually need feeding until her first workers arrive  
(if she has brood you can feed her some honey water 1-part honey to 3 parts water mix)
- First thing is to make sure your queen is alive and store the test tube she is contained in, within a dark place away from direct sun light! Make sure temp is not above **25 Degrees Celsius** (room temp). If you use a heat mat make sure you have a thermostat and a glass thermometer to record temperature aim for 24-28 degrees Celsius for your colony anything above 30 will cook them.
- If you have queen with eggs/brood wrap test tube in tin foil and only check on her every 3-4 days for 2 minutes until her first workers come as they stress easily at the foundation stage and can eat eggs and brood and could die.
- You can transfer the colony to a nest 72 hours after arrival and make sure the ants have access to food and water inside the nest (14 day guarantee is void once ants are transferred to a nest from the original test tube I recommend waiting at least 2 weeks before nest transfer to keep the warranty)

- The test tube should be sufficient enough to house her for the summer or at least the first 10-20 workers we recommend waiting to 10 plus workers before nest transfer.
- If the queen arrives or goes on her back at any point and is not getting up message me **ASAP** (I can give you a guide to fix this her stress levels will be too high)
- The test tube should be sufficient enough to house her for the summer at least the first 10-20 workers.
- **Keep the test tube moist!** The water in the bottom of the test tube will keep the colony hydrated until it runs dry then you can pipette 3-4 drops of water onto the cotton once a week or do a test tube change, I recommend it.
- You can check online information how to do a test tube set up and change the test tube, YouTube has some good videos on this it will also give you information on how to change ants to a new test tube.
- I recommend a heat matt for this species with temperature control (Thermostat) get a good quality one so you don't cook the queen! It will allow for maximum growth with the test tube you can keep them in an airing cupboard at 25-28 **Degrees Celsius**.
- Use a thermometer to check max temperature of your air in cupboard (anything over that could kill the queen)
- But slowly increase the temperature by 1-2 **Degrees Celsius every second day till you reach range of 25-28 Degrees Celsius**
- Read up on the species it's all a learning process! GOOGLE is your friend!

#### **Feeding your ants:**

- Messor require a main diet of seeds, we sell an organic variety of messor seeds on our website. You can also feed them dead small insects which you can crush like flies, crickets, grasshoppers for example. **Insects are needed for**

**brood development** (can feed them live food when the colony has more workers say 50 +)

- Boil insects before you give them to your colonies just place in boiling water to kill microbes.
- You can give your colony honey water so just buy some honey from your local shop and just add some water to it and place a tiny drop into the test tube (add a tiny bit of salt for Messor to 100ml water say tiny fingernail worth). Only add salt if you are not supplementing their diet with insects but insects are preferred
- When you buy an ant's nest you can connect it with tubing to a plastic container from an ordinary shop and place the food inside this container with some honey water in a milk bottle cap.
- Feed the ants every **2-3 days** and remove any uneaten remains and discard them after this time period (The queen doesn't need to eat until her first workers come but if her abdomen looks small you can give her some food).

#### **Hibernation:**

- Ants hibernate when winter kicks in as food is scarce in the wild. They need to **hibernate from late October/ early November till late February/ early April** keep them in a cool area around 10 **Degrees Celsius**
- This maximises the **queen's life expectancy** and her **egg laying yield**.
- When they come out of hibernation slowly increase their temperature maybe 1-2 **Degrees Celsius every other day**

- Colonies have already been hibernating so you can skip hibernation till next year or have a mini-4-week hibernation in Jan/February
- You can give them seeds and water during **hibernation but they don't need anymore than that. (keep the colony supplied with water)**
- They usually store seeds for winter and their metabolism slows down dramatically
- *Messor barbarus* do not sting but please note their **mandibles** are big so they may hurt you especially the **queens** and the **major workers**.

#### **Ant nests:**

I recommend transferring your ants to a nest when there are at least 10 workers or more that way they can care for the queen in a new environment. **Colonies fail because the queen is transferred to a big nest where you can't care for her and she dehydrates be patient and wait for the first 10 workers and keep the colony hydrated in the ant farm and test tube.**

#### **Recommended Nests**

For beginners and experienced keepers alike, I highly recommend 3D-printed acrylic-style nests with a clear acrylic lid and a plaster base. The plaster naturally regulates humidity, keeping colonies healthy with minimal effort. A natural tank setup is also a good option for people that prefer a more naturalistic environment. But will restrict viewing of the ants.

### **Our Nest Range**

**We offer a selection of expertly engineered nests that are affordable, long-lasting, and fully expandable as your colony grows.**

- **Modular Nests**
- **Built from ultra-durable materials designed to last many years—potentially decades.**
- **Fully modular design, allowing you to connect multiple nests seamlessly as your colony expands.**
- **Includes our unique door-slide system, letting you open new sections gradually while keeping unused chambers blocked off.**
- **Delivered fully assembled—all you need to do is attach the connectors (just two screws per connector, using the included hex key).**
- **A great long-term, low-maintenance solution for growing colonies.**

**Amazon link:**

**<https://www.amazon.co.uk/dp/B0G4F8HP1Z?th=1>**

**Best prices available directly:**

**<https://www.antsrus.com/nests>**

### **FAQ's:**

**Why is my queen not laying eggs or brood not developing?**

**It is possible she is hibernating you need to raise the temperature to around 20-25 degrees Celsius so the colony will be “woken” up from hibernation this is generally room temp of your average home.**

- **Live arrival guarantee we ensure the live arrival of the queen only upon delivery contact us within 24-48 hours of receiving the Queen dead on arrival with a picture of the dead queen and the original workers. DO NOT TRANSFER THE DEAD QUEEN OR WORKERS TO A NEST AS THIS VOIDS YOUR WARRANTY. For our additional 14-day guarantee for European species the Queen and workers must be kept in the original test tube sealed with the cotton and care sheet instructions followed if you want to keep**

**this additional guarantee do not transfer to a nest or your warranty is VOIDED (we recommend you keep the 14-day warranty).**

- We have no control over the environment outside the test tube and have no influence in the conditions the responsibility once placed outside the test tube within the 14-day period the responsibility is with the buyer. 9 times out of 10 colonies die in the nest due to lack of water access, food, temperature, oxygen or stress due to vibrations or exposure to excess light. If your colony does fail inside a nest contact us, we can advise what went wrong but it is up to you to buy another ant colony, you will succeed but sometimes it does not work the first time. Research is key to success with ant keeping and follow our guides.**

**Gel ants' nests as a substrate are not suitable for queen ants and workers!**

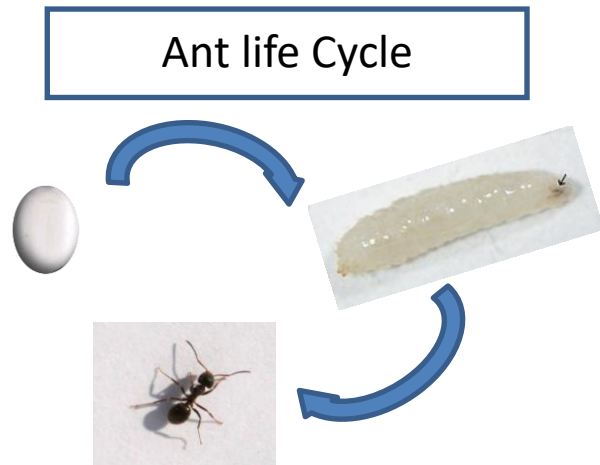
**You can convert gel ant farms using clay soil mix as substrate instead of gel which you can easily buy online. Google "clay soil"**

**Questions or more products such as nests and more ant's email:**

**[antsrus1@gmail.com](mailto:antsrus1@gmail.com)**

**Facebook group: <https://www.facebook.com/antsrus1/>**

Website: [www.antsrus.com](http://www.antsrus.com) (Lowest prices if you buy direct)



The process takes on average 4-8 weeks which is temperature dependent, each stage is 2-3 weeks long. This process stops or slows dramatically if the colony is hibernating.